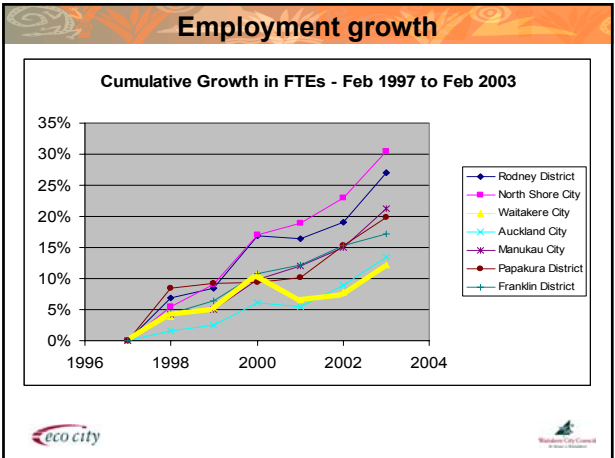
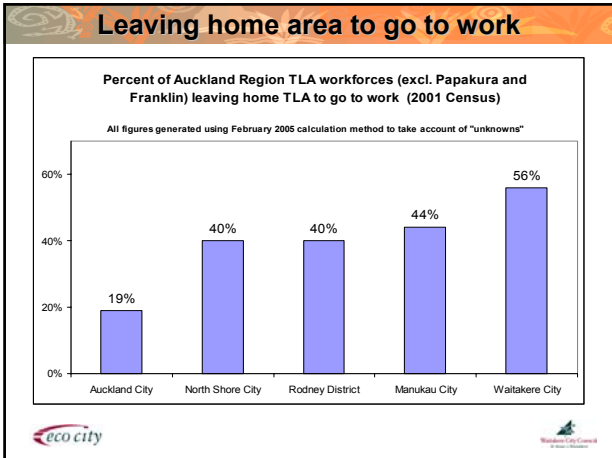
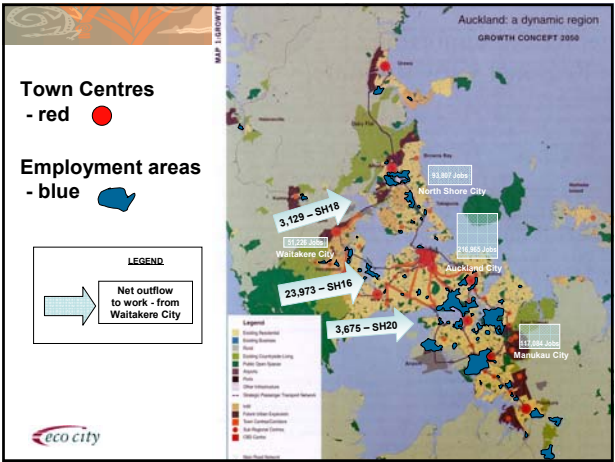
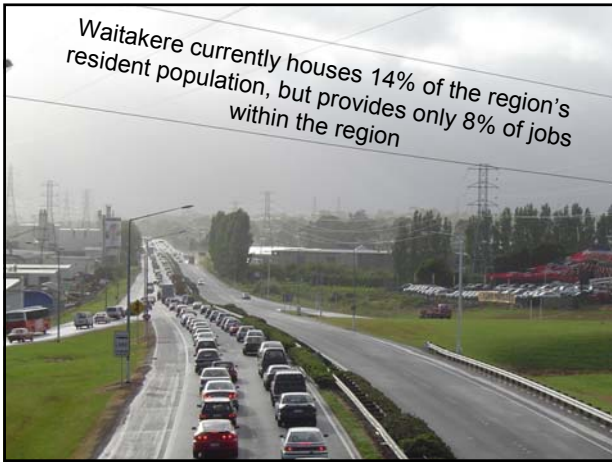


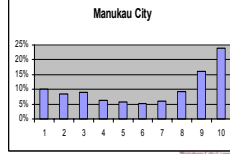
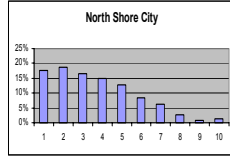
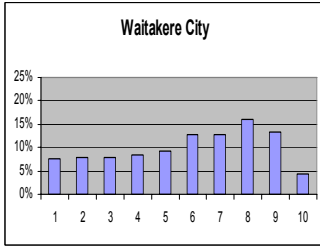
Waitakere City

- Formed in 1989 from Waitemata City and a collection of smaller Borough Councils
- Fifth largest city in NZ, fast growing, young
- Declared an Eco-city in 1993
- History of being dormitory suburb



Poverty is a living reality in Waitakere City

30 neighbourhoods (7263 people) in our City are in the lowest SE decile of NZ



30,000 residents of our City are in the bottom 20% of the deprived nationwide



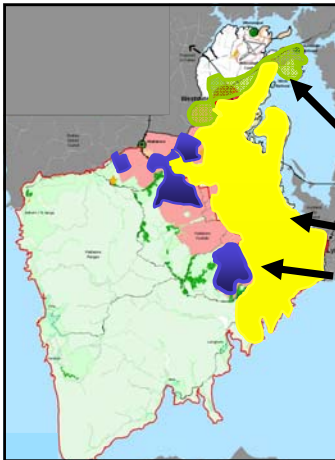
Waitakere's Response Package

- Focus on integration
- Multi-faceted
 - Ranges protection
 - Urban intensification around centres
 - New growth
- Providing local employment
- Intensification around centres
- Manage growth responsibility



Growth Distribution for Waitakere City

- 17%** Future Growth outside 1999 MUL based on urban densities
- 78%** Increased proportion of growth mostly directed to centres
- 5%** Reduced to existing capacity based on existing vacant lots and approved structure plans



New Lynn Town Centre

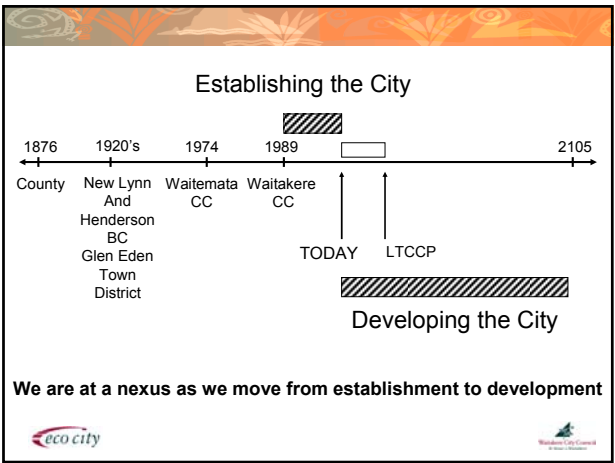
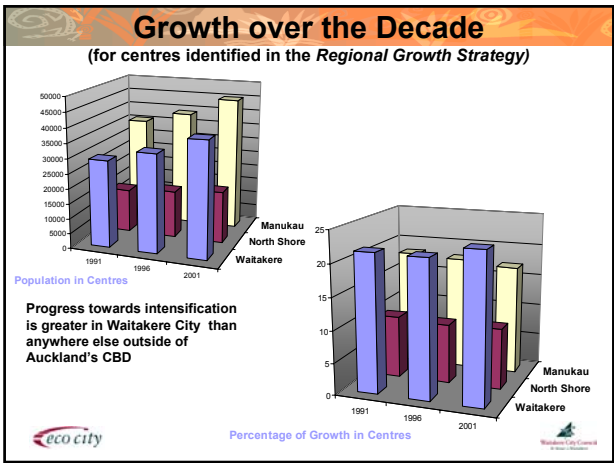


Henderson Town Centre



Westgate Town Centre & Massey North Employment Precinct





Business as usual? Not an option....

"We are spending Earth's natural capital, putting such strain on the natural functions of Earth that the ability of the planet's ecosystems to sustain future generations can no longer be taken for granted"

Dr Walt Reid, One of the Millennium Assessment's core authors.

eco city

Influencers on the horizon

- Climate change
- Globalisation
- Demographic change
- Technological change
- Resource scarcity

–E.g. Energy and particularly fossil fuel

What is the impact on a family in Massey if the price of oil doubled in 10 years ?, if it quadruples in the next 15 years ?

eco city

Our Guiding Principles

SUSTAINABLE FUTURE	GLOBAL RESPONSE	NATIONAL RESPONSE	LOCAL RESPONSE
<p>WAITAKERE CITY COUNCIL STRATEGY AND DEVELOPMENT UNIT - Delivering on a sustainable Waitakere City future. Sets the strategic direction and assists with the integration of Council commitments and principles into public policy and decision making across the whole of council. In 2005 WCCC also adopted the long term framework of sustainability, livability and resilience as appropriate criteria for guiding the city towards a sustainable future.</p>	<p>Council is committed to:</p> <p>THE UNITED NATIONS AGENDA 21 ESPECIALLY Principle 3: Human beings are at the centre of concerns for sustainable development. They are entitled to a healthy and productive life in harmony with nature.</p> <p>THE AALBORG PRINCIPLES</p> <ol style="list-style-type: none"> 1. Governance 2. Local management towards sustainability 3. Natural Common Goods 4. Responsible consumption and lifestyle choices 5. Planning and design 6. Better mobility, Less traffic 7. Local Action for Health 8. Vibrant and sustainable local economy 9. Social equity and justice 10. Local to global 	<p>Council is committed to:</p> <p>THE NZ GOVERNMENT'S SUSTAINABLE DEVELOPMENT PROGRAMME OF ACTION</p> <ol style="list-style-type: none"> 1. Considering the long term implications of decisions 2. Seeking innovative and win win solutions 3. Using best information to support decision making 4. Address risks & uncertainly precautionary approach 5. Working in partnership with central and local governments, other sectors - encouraging transparency 6. Considering global, national and local perspectives 7. Decoupling economic growth & pressures on environment 8. Respecting new limits, protecting ecosystems, integrated resource management 9. Working with tangata whenua and iwi 10. Respecting human rights, rule of law and cultural diversity 	<p>Council is committed to:</p> <p>WAITAKERE CITY'S 5 STRATEGIC PRIORITIES Te Tiriti o Waitangi Sustainable Development Fast Call for Children Safe City Lifelong Learning</p> <p>WAITAKERE CITY'S 9 STRATEGIC PLATFORMS</p> <ol style="list-style-type: none"> 1. Urban and Rural Villages 2. Integrated Transport and Communitication 3. Strong Innovative Economy 4. Strong Communities 5. Active Democracy 6. Green Network 7. 3 Waters 8. Sustainable energy/clean air 9. Zero Waste

eco city

Long term planning approach

Resilience

Livability

Sustainability

Integrated policy approach rather than single issue

eco city

Local Government Act 2002

Council's must

- identify the outcomes the community wish for their City
- prepare a 10 year Long Term Council Community Plan (LTCCP) every 3 years.

It provides for local authorities to play a broad role in promoting the social, economic, environmental and cultural well-being of their communities, taking a sustainable development approach.

Other agencies, both community and government have to be involved. The legislation particularly confirms their engagement in the process of identification and measurement of progress.

Building on previous consultation

Previous visioning and consultation was gathered together into a display called "the journey".

A series of consultation workshops were then held between May and August 2005. (4 citywide, 1 hui, 1 fono, 1 youth, 4 ward-based and 1 business)

Waitakere's people were asked to consider

- How they see the city developing in the next ten years.
- What they most value about their neighbourhood.
- What their main concerns are relating to the future of Waitakere.



A two world view

To recognise the partnership and take advantage of the moemoeā or vision that is implicit within the Treaty of Waitangi.



Maori world view Community Outcomes

- Te Mana Whakahaere - Autonomy
- Nga Manukura - Maori Leadership
- Whaiora – Participation in Society
- Toiora – Personal Wellbeing & Healthy Lifestyle
- Waiora – Environmental Protection
- Mauri Ora – Access to Maori Resources

Tikanga / Kawa - Values

- Rangatiratanga Whanau based self determination
- Whanaungatanga Relationship Building
- Kotahitanga Collaboration
- Wairuatanga Intrinsic values
- Kaitiakitanga Guardianship
- Mana Tipuna / Whakapapa Ancestral links between past present and future

Taiwi Outcomes

- Urban and Rural Villages
- Strong Economy
- Sustainable and Integrated Transport
- Sustainable Environment
- Green Network
- Strong Communities
- Vibrant Arts and Culture
- Working Together

Golden Threads

- Sustainability
- Safety
- Lifelong Learning
- Children and Youth
- The Treaty of Waitangi
- Equity and fairness
- Empowerment and participation

Waitakere City Council's Strategic direction

- Waitakere City has been an Eco-city since 1993
- Since 2003 the City has had a series of strategic platforms are interwoven with strategic priorities, that identify the strategic direction of Waitakere City Council.
- Council recently confirmed almost the same Strategic Platforms and Principles
- Reviewed over next two years

Waitakere City Council 06-16 Strategic Platforms

Urban and Rural Villages Nga kainga taone, tuawhenua

Integrated Transport and Communication Te Whakaurunga Waka. Te Whakawhiti korero

Strong Innovative Economy He tupuranga kaha ihi

Strong Communities He iwi kaha

Green Network He tuituitanga kakariki

Three Waters Nga Wai e toru

Sustainable Energy and Clean Air He kaha motuhake He hau ora pai

Zero Waste He whakakore otaota

Strategic Partnerships & Advocacy Leader: New Migrants

- Internal policy/strategy development and input
- Support the Community Partnership Agreement and shared work programme between Council and the Waitakere Ethnic Board
- Internal and external advocacy on local settlement issues
- Work collaboratively with agencies and community groups to support successful settlement
- Auckland Regional Settlement Strategy development and future implementation
- Settlement Support team – Jennie and Julie

Taiwi Outcomes

- Urban and Rural Villages
- Strong Economy
- Sustainable and Integrated Transport
- Sustainable Environment
- Green Network
- Strong Communities
- Vibrant Arts and Culture
- Working Together

A Waitakere society where settlement for new migrants and refugees is a positive process for everyone

The Settlement Support Coordinator

Talk with individuals, organizations and groups to find out what the issues are and explore further to help resolve issues

Support projects in Waitakere that enhance settlement

Monthly newsletter to connect everyone with what is happening

Helping organize the monthly network meetings of New Out West

Organizing workshops to provide information and skills to migrants and service providers

Settlement Support Advisor

- Meeting with migrants and refugees at Waitakere's four Citizens Advice Bureaux
- Talk about settlement service and information needs and refer to appropriate services and information
- Organize workshops to provide information and skills to migrants and service providers.
- Help organize the monthly network meetings of New Out West



Citizens Advice Bureau

Nga Pokapu Whakahaaki Pitahi mai i te Iwi Whānau



The Treaty of Waitangi (Te Tiriti o Waitangi)

Sustainable Development

First Call for Children

Safe City

Lifelong learning



Migrant Information Coordinator

(commenced 1 July 2005)

- promote civic and community information services to new settler communities.
- respond to the information needs of new settlers by working with new settlers and service providers
- ensure that the information services available are relevant, accessible and delivered in culturally appropriate ways.



Migrant Information Coordinator

Works closely with:

- Multicultural Services Librarian
- Learning Centre Coordinators
- Settlement Support Coordinator
- Settlement Support Advisor
- Partnerships and Advocacy Leader, New Migrants
- CAB managers, volunteers and clients
- Community-based migrant and refugee support organisations and service providers
- New settler families and individuals



Multicultural Services Librarian

(Service and Collection Development)

- identify emerging ethnic communities
- develop foreign language material and ESOL resource collections relevant to the needs and interests of ethnic communities
- develop communication strategies and develop services to remove barriers to access the information and library services
- develop programmes and organise activities to support life long learning



Multicultural Services

All seven library branches in Waitakere now offer:

- Foreign language books in more than 40 languages
- Multimedia and world music
- Extensive ESOL resources
- Bilingual books and dictionaries
- Multicultural oral history collection
- Special bilingual story-times
- Access to 'Online Newspapers' from around the world



The Long Term Council Community Plan

Describes the Council's response to its guiding principles and to the identified community outcomes.

Sets out the Council's work programme for three years and an indicative work programme for the next seven years thereafter.



Plan for the city

- Community outcomes:
Identifies community aspirations
- LTCCP:
Identifies Council's responses



Next

Plan for the City: It will identify responses and address gaps